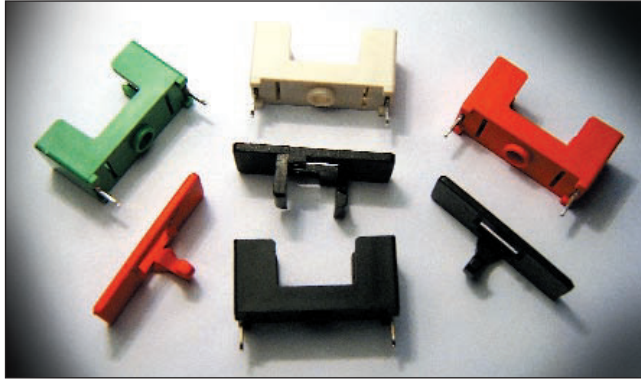
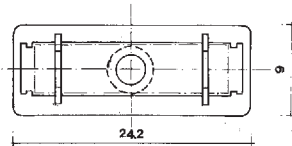
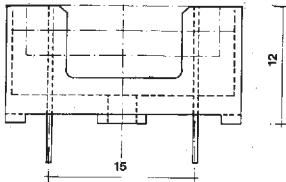
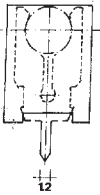


PORTAFUSIBILI

PER FUSIBILI Ø 5x20MM.

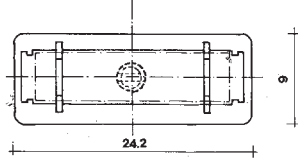
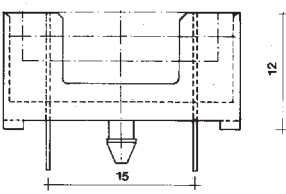
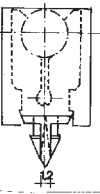


PORTAFUSIBILI / FUSE HOLDERS



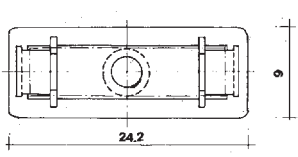
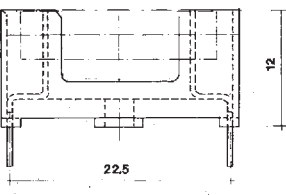
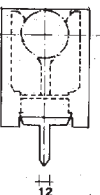
FH10 BLACK

PINS VERSIONE SINGOLA - PASSO 15 -
CORPO ISOLANTE IN NYLON -
CONTATTI IN OTT ONE ST AGNATO
PORTATA: 6,3 A - 250 V
SINGLE PINS - PITCH 15 - NYLON
INSULATING HOUSING
TIN PLATED BRASS - CONTACTS
CAPACITY: 6,3 A - 250 V



FH11 WHITE - BLACK

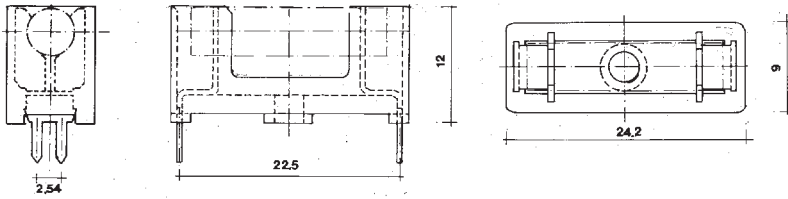
PINS VERSIONE SINGOLA CON CLIP -
PASSO 15 - CORPO ISOLANTE IN NYLON
- CONTACTS IN OTT ONE ST AGNATO
PORTATA: 6,3 A - 250 V
SINGLE PINS WITH CLIP - PITCH 15 -
NYLON INSULATING HOUSING - TIN
PLATED BRASS CONTACTS CAPACITY: 6,3
A - 250 V



FH30 WHITE - BLACK - RED - GREEN

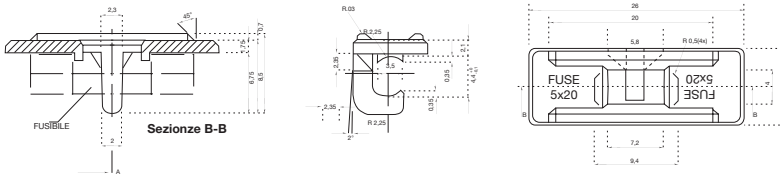
PINS VERSIONE SINGOLA - PASSO 22,5
- CORPO ISOLANTE IN NYLON -
CONTATTI IN OTT ONE ST AGNATO
PORTATA: 6,3 A - 250 V
SINGLE PINS - PITCH 22,5 - NYLON
INSULATING HOUSING - TIN PLATED
BRASS CONTACTS CAPACITY: 6,3 A - 250 V

PORTAFUSIBILI / FUSE HOLDERS



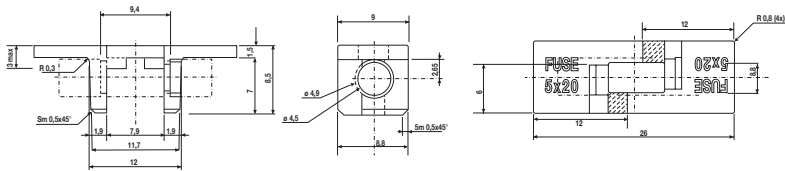
FH40 BLACK

PINS VERSIONE DOPPIA - PASSO 22,5 -
CORPO ISOLANTE IN NYLON -
CONTATTI IN OTT ONE ST AGNATO
PORTATA: 6,3 A - 250 V
DOUBLE PINS - PITCH 22,5 - NYLON
INSULATING HOUSING - TIN PLATED
BRASS - CONTACTS CAPACITY: 6,3 A -
250 V



FH-CE WHITE - BLACK - RED - GREEN

COPERCHIO DEL PORTAFUSIBILE
CORPO ISOLANTE IN NYLON
FUSE CARRIER CAP INSULATING BODY:
NYLON



FH-CA WHITE - BLACK - RED - GREEN

COPERCHIO DEL PORTAFUSIBILE
CORPO ISOLANTE IN NYLON
FUSE CARRIER CAP INSULATING BODY:
NYLON